

From the Visual Studio main menu select T&M Toolkit

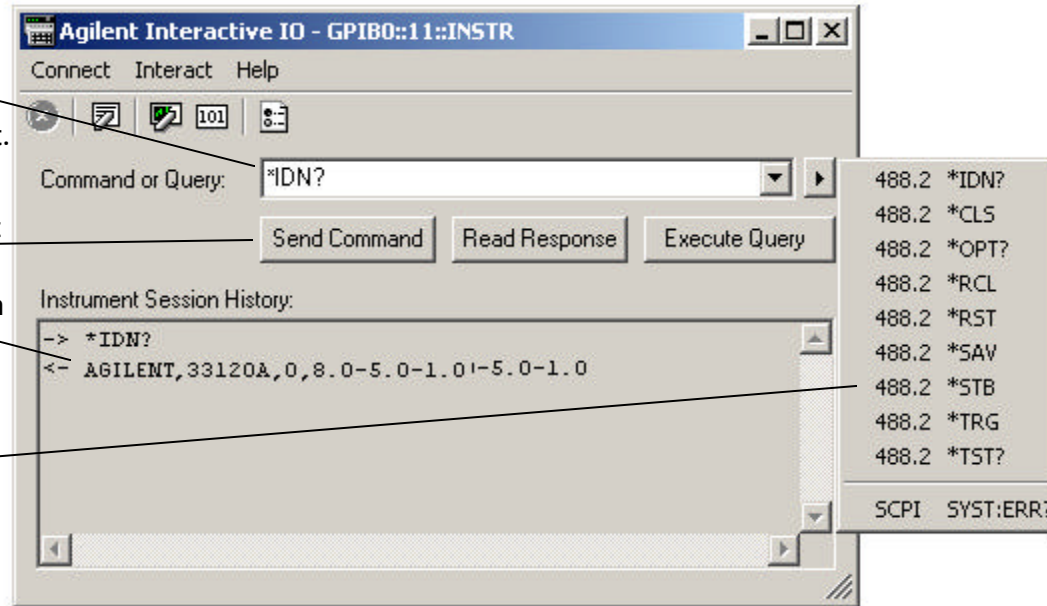
Agilent Interactive IO

Enter a command or query here or select from the command list.

Send, Read, or Execute an instrument command or query.

Review the session history here.

Command list.



Agilent T&M Programmers Toolkit

Featuring Microsoft® Visual Studio® .NET



QuickStart Card

This *QuickStart Card* guides you through a simple introduction to the Agilent T&M Programmers Toolkit for Visual Studio .NET. Agilent T&M Toolkit combines the power of Visual Studio .NET with Agilent's 60 years of measurement expertise to bring design and test engineers easy-to-use software tools and components for instrument control and automation applications.

T&M Toolkit's simple instrument discovery, driver and project wizards, rich class libraries, and graph controls are designed to simplify your job. You can connect and test your instruments and acquire, analyze, and graphically display your data from an Agilent T&M Toolkit environment fully integrated into Visual Studio .NET. Agilent T&M Toolkit is designed with a .NET standard look-and-feel, and a complete online Help system.

From the Visual Studio main menu select T&M Toolkit

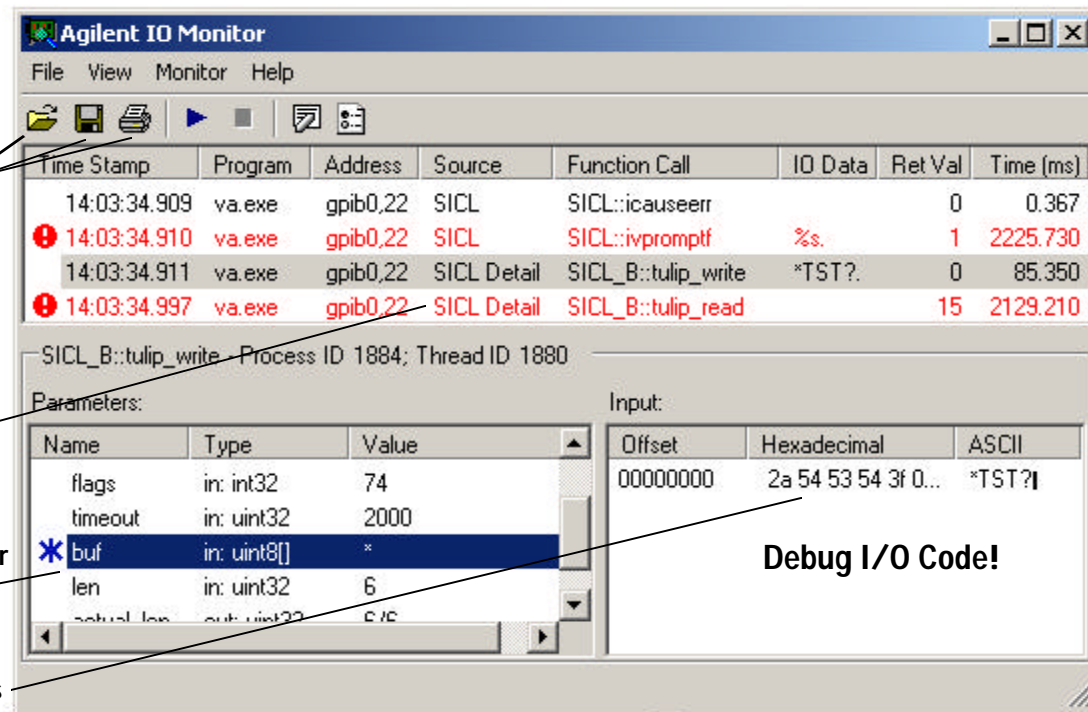
Agilent IO Monitor

Open, Save, and Print trace results

Traces I/O layers for VISA, VISA-COM, SICL, and SICL Detail

Input buffer for the chosen trace

Buffer details



From the Visual Studio main menu select File | New | Project

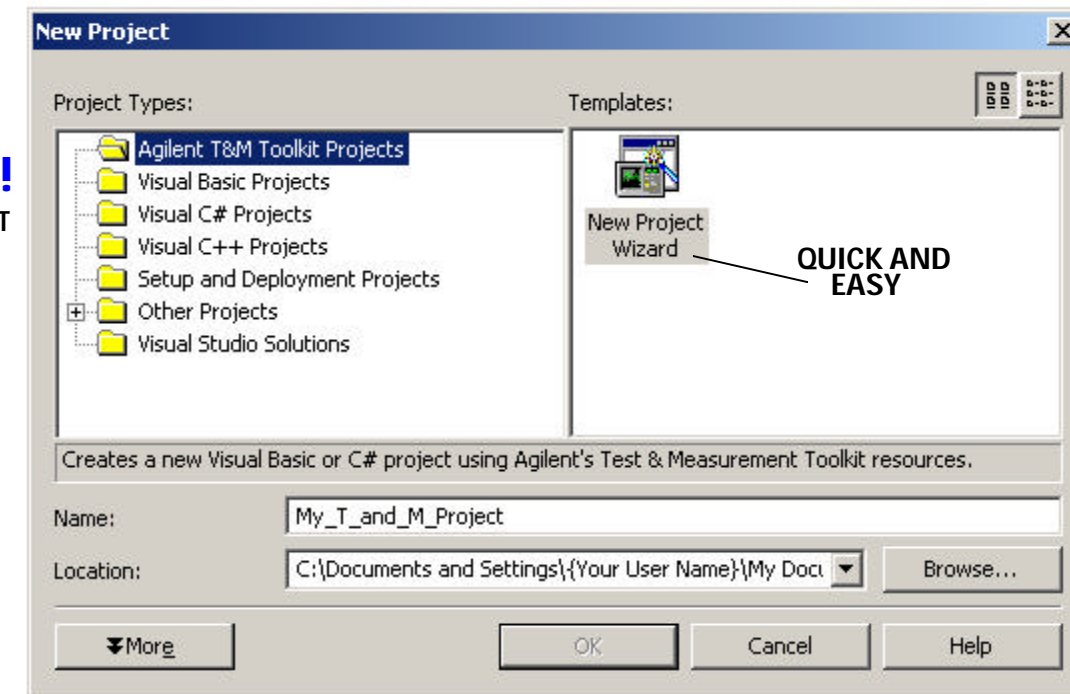
The New Project Wizard

START HERE!

Select C# or VB .NET
Create a:

- Windows App
- Console App
- Class Library or a Windows Control Library

Automatically add class libraries to your project



QUICK AND EASY

Agilent T&M Programmers Toolkit

From the main menu, use T&M Toolkit tools by selecting the T&M Toolkit menu item or by clicking a T&M Toolkit icon.

Start Instrument Explorer and find instruments connected to your PC. Configure instrument I/O sessions. Drag and drop instruments into your code.

Select the Agilent T&M Programmers Toolkit start page. Get quick access to the information you need to start a T&M project and find out about new, helpful Agilent services.

T&M Toolkit Help is fully integrated into Visual Studio Help. All of these class libraries have online help, there are tutorials, sample programs, and the F1 key provides help with a single keystroke.

A Form Designer Toolbox tab provides access to the 2D Graphics Objects

The Function Waveform Generator creates virtual waveforms for demonstration purposes

Notice the new Visual Studio .NET feature, Dynamic Help. Turn this on from the main menu, Help | Dynamic Help.

The screenshot displays the Microsoft Visual Basic .NET IDE with the Agilent T&M Programmers Toolkit installed. The main window shows the 'Getting Started' page with a 'Samples' tab selected. The 'Agilent Instrument Explorer' shows a tree view of instruments including 'DMM (@7)'. The 'Instrument Details' pane shows information for the selected DMM instrument, such as Name, Description, Resource Name, Connection Status, Device Name, Hostname, IDN Response, IP Address, and Interface Protocol. The 'Toolbox' contains various 2D graphics objects like 'FunctionWaveformGenerator', 'ComplexGraph', 'MagnitudeSpectrumGraph', 'PhaseSpectrumGraph', 'StripChart', 'WaveformGraph', 'XYGraph', and 'YGraph'. A 'WaveformGraph' control is visible in the design area, displaying a square wave. The 'Dynamic Help' pane is open, showing a list of help topics and a 'Samples' section.